



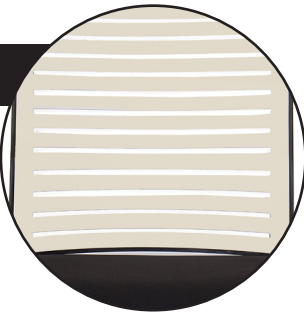
AC8282  
QuickShip



AC8252  
QuickShip

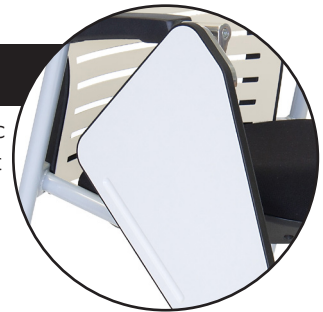
**Slotted Poly Backrest**

Ensures great support through the breathable back design that provides a really good sit.



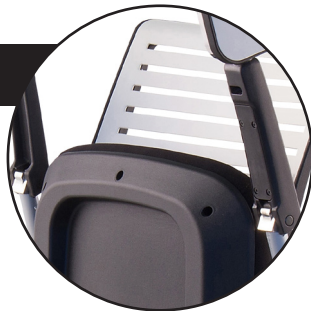
**Optional Writing Tablet**

Has the option of an anti-panic left or right hand writing tablet to make this chair perfect for educational, training, or meeting sessions that require an area for writing or to use electronic devices.



**Flip-up Seat and Arms**

Offers a flip-up seat and arms to enable easy stacking and nesting of chairs in between uses.



**Stacking Capabilities**

Provides for convenient storage in a reduced footprint by stacking up to 4 chairs on the ground.



QUICKSHIP: QuickShip Standard with black upholstery has a lead time of 2 days, except for orders exceeding 100 chairs, check with Customer Service. QuickShip Color lead time is 7 days, except for orders exceeding 20 chairs, check with Customer Service. Products ship unassembled - assembly is required.



AC8252  
with optional tablet



AC8252  
QuickShip

ace	MODEL #	DESCRIPTION	QUICKSHIP										
			STANDARD	COLOR	COM/A	B	C/COL	D	E	F	G	H	LTH
	<b>AC8252</b>	Nesting/Stacking Chair with Upholstered Seat, Poly Back, and Arms	\$559	\$629	\$629	\$644	\$674	\$704	\$734	\$764	\$794	\$824	\$884
	<b>AC8282</b>	Nesting/Stacking Chair with Upholstered Seat, Back Pad, and Arms			\$699	\$722	\$767	\$812	\$857	\$902	\$947	\$992	\$1082
	SEAT:	18W x 17.5D x 18H											
	BACK:	17.5W x 17.5H											
	OVERALL SIZE:	22W x 23D											

Standard Specifications	DESCRIPTION	QuickShip model requires simple attachment of backrest with 2 screws supplied.
<b>Nesting</b>	Continuous nesting, add 7" depth for each extra chair	
<b>Stacking</b>	Stacks up to 4 high on the floor with or without writing tablet	
<b>Backrest</b>	Ensures great support through the breathable back design that provides a really good sit	
<b>Arms</b>	Flip-up arms with durable poly pads	
<b>Frame</b>	Silver powder-coated tubular metal	
<b>Carpet Casters</b>	Hard wheel free-rolling casters for soft surface	

Optional Specifications	DESCRIPTION	
<b>Writing Tablet AC8252/TAB/L</b>	Writing tablet left, 10W x 13D. Weight capacity up to 100 lbs	\$225
<b>Writing Tablet AC8252/TAB/R</b>	Writing tablet right, 10W x 13D. Weight capacity up to 100 lbs	\$225
<b>Hard Floor Casters</b>	Soft wheel braking casters for hard floor	\$35
<b>Carpet Glides</b>	Nylon glides for carpet surface	\$35
<b>Hard Floor Glides</b>	Glides with soft surface for hard floor	\$45

COM/COL	SINGLE CHAIR COM		SINGLE CHAIR COL	
	YARDS		SQUARE FEET	
<b>Seat Only</b>	.75 yd.		13 sq. ft.	
<b>Upholstered Back Pad</b>	.75 yd.		13 sq. ft.	