



SW9840
with optional arms



SW9820
with optional arms

Contoured Seat & Back

Provides great support through the independent seat and back which has multi-position back lock.



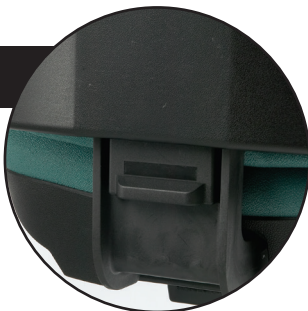
Dynamic Support

Has a backrest angle with tension adjustment to support the back dynamically as you move, or it can be locked into your preferred position.



Adjustable Backrest

Offers a simple touch-latch backrest that adjusts height up to 4" for optimal lumbar support.



Armrests

Gives you the option of specifying height adjustable arms with soft PU pads.



QUICKSHIP: QuickShip Color lead time is 7 days, except for orders exceeding 20 chairs, check with Customer Service. Products ship unassembled - assembly is required.



SW9820T



SW9820
with optional arms

seatwise task



MODEL #	DESCRIPTION	QUICKSHIP COLOR	COM/A	B	C/COL	D	E	F	G	H	LTH	
SW9820	Mid Back Task Chair		\$499	\$499	\$530	\$593	\$655	\$718	\$780	\$843	\$905	\$1030
SW9840	Tall Back Task Chair		\$549	\$549	\$580	\$643	\$705	\$768	\$830	\$893	\$955	\$1080
SW9820M	Stool with Mid Back		\$619	\$619	\$650	\$713	\$775	\$838	\$900	\$963	\$1025	\$1150
SW9820T	Tall Stool with Mid Back		\$639	\$639	\$670	\$733	\$795	\$858	\$920	\$983	\$1045	\$1170
TASK CHAIR SEAT:	19W x 18D x 16-21H											
MEDIUM STOOL BACK:	19W x 18D x 19-26H											
TALL STOOL SEAT:	19W x 18D x 23-32H											
MID BACK:	16.5W x 17-21H											
TALL BACK:	16.5W x 20.5-24.5H											
BETWEEN ARMS:	18.5W											

Standard Specifications

DESCRIPTION

Function	Independent seat and back with multi-position back lock
Backrest	Height adjustable
Carpet Casters	Hard wheel free-rolling casters for soft surface

Optional Specifications

DESCRIPTION

HA2 Arms	Height adjustable arms with soft PU pad	\$145
Sliding Seat	Sliding seat with 2" range. (adds 1" to seat height)	\$60
Hard Floor Casters	Soft wheel braking casters for hard floor	\$35

COM/COL

SINGLE CHAIR COM

SINGLE CHAIR COL

	YARDS	SQUARE FEET
Mid Seat and Back	1 yd.	17 sq. ft.
Tall Seat and Back	1 yd.	17 sq. ft.