



konstrux 360



Maximize space through applications
that support collaboration and enhance
productivity with konstrux.



2 **concept**

4 **application**

10 **electrical**

12 **screens**

16 **storage**

18 **accessories**

20 **finishes**

22 **gallery**

concept

inventive. collaborative. productive.



konstrux is a space enhancement table program that creates productive environments that balance focus and collaboration while supporting rapid changes in technology. Through maximum space utilization that includes freestanding modular table system for working, meeting, training and education, as well as screens, storage systems and ergonomic task chairs, we can provide you with furniture solutions that meet your company's unique culture and work style.

Today's work environments are quickly trending toward informal with smart employers realizing the benefit of creating dynamic spaces that cultivate additional employee engagement. These dynamic spaces promote collaboration, inspire innovation, enhance communication and increase productivity, all within a reduced footprint to give you the most cost effective solutions for highly functional businesses and corporations to succeed.

application

conceptualize. prioritize. energize.



Identifying how work is performed and how your business furnishings can address your company's unique work patterns and habits is the first step to conceptualizing the application and prioritizing the types of spaces that should be incorporated in the design. konstrux is a freestanding modular table system that has interchangeable components and multiple linkable configurations that can fit all of your working, meeting, and training needs. Through the inventive KAP, which allows for linking between tables, work surfaces and more, konstrux can respond to changing technologies and shifts in business and corporations. konstrux even puts power within every user's reach through plug and play power and data outlet boxes. Simple wire management contains power cables below the surface to keep the environment organized and energized.

The simplicity of konstrux is matched only by the number of solutions it can provide for focus, shared, and team work styles. Through the flexibility of konstrux, multiple work styles are supported while allowing for design freedom and diversity to create an environment that also promotes more interaction between employees, fosters a culture of collaboration, and offers flexible space that can be adapted to individual workers needs.



benching



Benching is trending well in today's business environments since it adds the benefit of flexibility to meet a wide range of applications and can be cost effective as companies look for more ways to reduce costs. Benching is also a great way to maximize space utilization while maintaining a clean and streamlined look providing for individual work as well as collaboration with team members. Various layouts can be achieved such as rectilinear, angled or wave. We can help your organization with a strong set of benching solutions to design spaces that help employees feel engaged as well as accommodate individual and team needs.

clusters



Through rapidly changing technologies, the need for larger workspaces has become obsolete as well as walls which are increasingly being taken down as more organizations embrace open space floor plans. Clusters are a great solution for reducing the real estate between workstations while maintaining different levels of privacy for focus and team work. Various configurations used in your design can facilitate a workplace that caters to a variety of work styles while being cost effective. Diverse workspace shapes allow for differing work applications grouped together to enhance teamwork while respecting the required criteria for the task.

private offices



There is still a need within organizations for private office space and konstrux provides many solutions for individual desks that incorporate storage and electrical capabilities. Through konstrux's adaptability and flexibility, private offices can be designed that maintain a seamless aesthetic throughout an organization.

reception



Reception desks, individual or shared, are very important in the scheme of the open floor plan and should retain the aesthetic of the design throughout the area. konstrux offers many complementing configurations that are functional and also engaging to provide solutions for your reception areas as well as individual workspaces for employees that deal with sensitive and confidential issues within the organization.

meeting



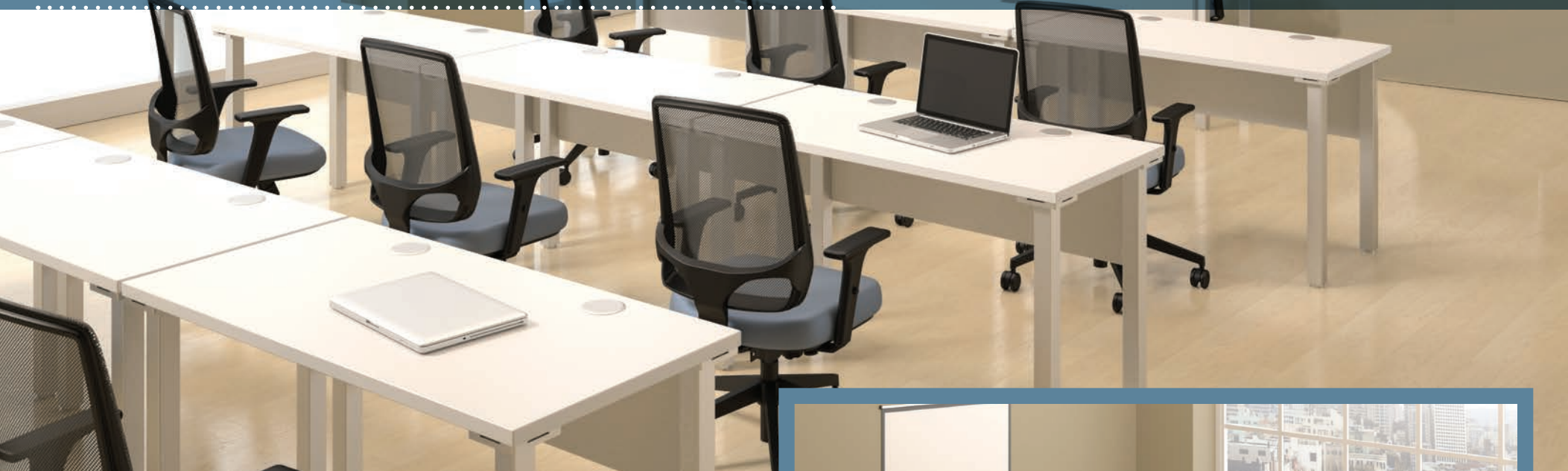
Flexible and on demand space to accommodate planned or impromptu meetings have increased in frequency as more organizations embrace a collaborative culture to drive success. With these types of dynamic spaces that are designed specifically to promote collaboration and inspire the sharing of ideas to increase productivity, the ability to power-up or be connected is essential. konstrux offers many solutions for small meetings using a simple pedestal base, small tables with a single base, or larger tops with more than one base.

conference



konstrux has a unique KAP application which enables us to offer many solutions for all of your conference needs. Different size and shapes of the tops give you endless possibilities to design exactly what you need. With konstrux and the integration of power and data along with audio and video capabilities, the ideal solution can be met regardless of the use. By offering various leg types, post and pedestal, konstrux enables many unique solutions.

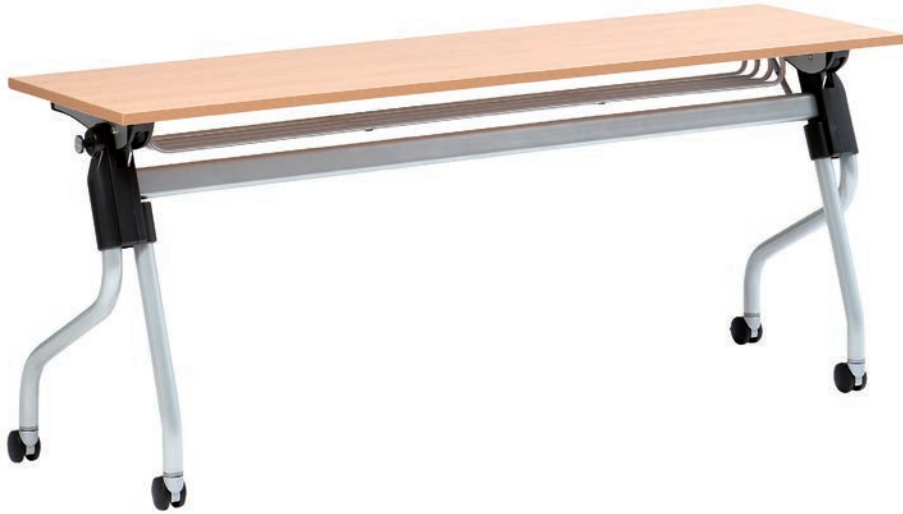
education



The importance of keeping your employees educated and trained in the skills that enable growth, both professionally and personally, is paramount to every organization for retaining talent. konstrux was designed with this philosophy and provides mobile and flip-top tables that enable configurations for large and small education or training session which can also be easily changed or adapted to meet a variety of needs. Power and data can also be seamlessly integrated for the function you require.



nesting



The konstrux nesting tables are the perfect solution for meeting your training, conference, education and workspace needs. They incorporate a streamlined flip-top design along with a fashionable frame structure that can easily be set-up or stored by using the single-handed, one-touch quick lock button. These tables nest together in a straight line for convenient storage in a reduced footprint and the nylon bumper protects the tops. There are also accessories available that will provide flexibility and let you customize the tables to meet a variety of needs. Those accessories include a clip-on modesty panel, underhanging steel organizer tray for personal storage, ganging clips to keep the tables neatly in line, and the Videll electrical plug and play system to enable you to power up each and every table.



electrical

connect. distribute. share.

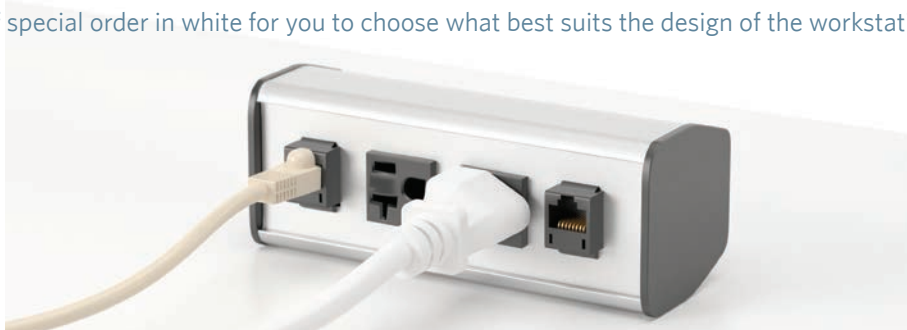


Electrical and data capabilities have become critical in today's work environment. konstrux has a number of various electrical systems that can work individually or collectively to create the ideal solution for your requirements from simple plug in desk mounted fittings such as Deckon, to the more capable Electri-Bench with cable trays and power paks. All solutions are UL approved and are available in a molded plug or hard wired version in one, two or three circuit capability depending on the wiring of your building. Whether you need an electrical solution for wires above or below the desk, plug and play options or more, konstrux will deliver.



Deckon Series

Deckon is a single circuit above the desk unit which offers various configurations of power and USB for quick and easy access. These units install with a clamp and plug directly into the closest source of power. Available standard in black or silver, we also offer the option of special order in white for you to choose what best suits the design of the workstation.



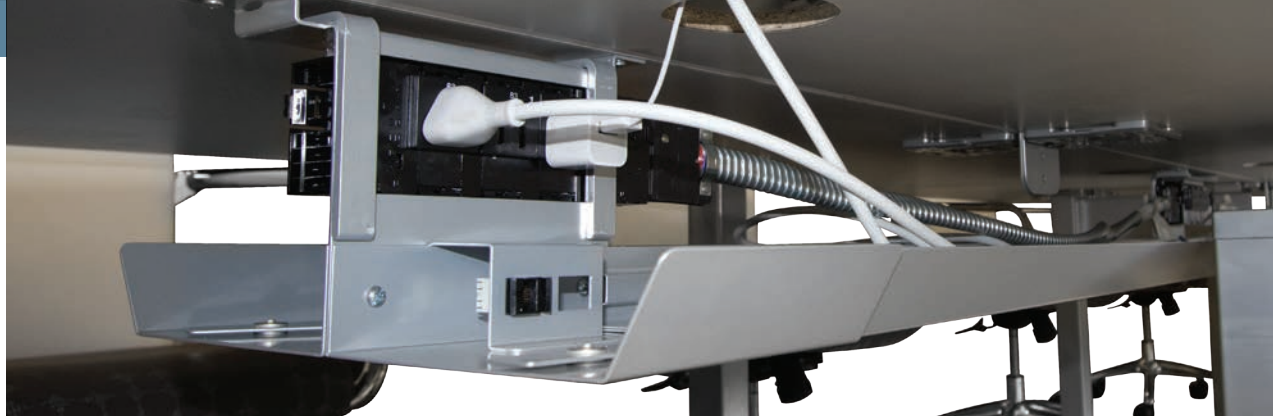
Videl

Videl is available in either single circuit molded plug version or multi-circuit hard wired version. This unit can either be installed with a flush mount grommet in the table surface or below the table in the wire management trough. The units are also available with 2 cut outs for either RJ11 or RJ45 depending on requirement.



Electri-Bench

Electri-bench is a system designed to accommodate today's power and data requirements for either one station or many stations within benching. The system links together to accommodate both power and data cables neatly under the desk top while still allowing easy access. Single Circuit, Circuit Two, or Circuit Three known as Isolated Ground, can be achieved depending on the wiring of your building. Simple plug and play cables enable easy connection of the electrical units and the unique simplexes ensure that the circuits cannot be mistaken due to the connecting method and markings on the plug.



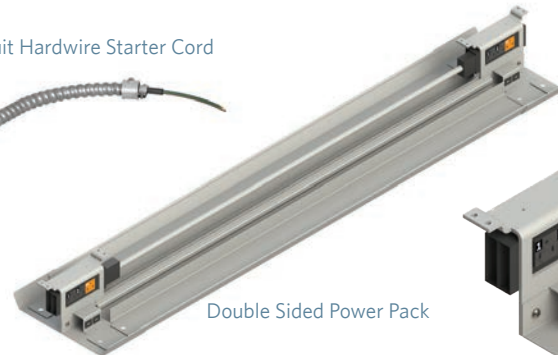
3 Circuit Hardwire Starter Cord



Connector Cable



Double Sided Power Pack



Single and Double Sided Power Units

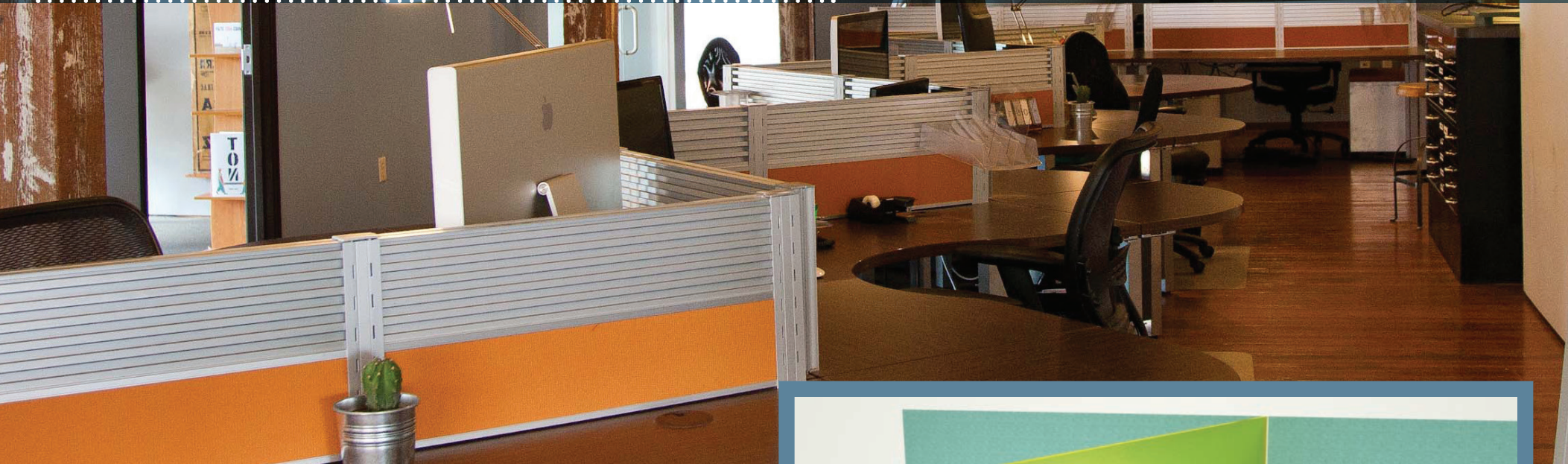


Electrical Specifications:

- 8 wires, 3 circuit, 2 utility share ground, 1 isolated
- Double sided power blocks, each side can access up to 3 circuits
- Simplexes are interchangeable permitting any required circuit combination
- Complies with National Electric Code | UL/Listed Recognized
- All circuits rated for 20 AMP | Whip end to be connected to building power by an electrician

screens

privacy. acoustics. function.



Privacy is very important to employees well being as it gives them the ability to complete tasks at hand without disruptions and completely focus on work. konstrux offers many types of screens that provide not only privacy and suspended accessories, but also a place to tack notes or pictures to make the workspace individualized to their particular work style.



privacy screens



The privacy screen is a simple screen to create visual privacy without isolation. This ensures that people are aware of their surroundings but have sufficient privacy so that they may focus on their work. Studies have shown that when people are isolated and then disturbed it takes much longer for them to get back to their previous level of concentration than the people who enjoyed privacy not in isolation. The clean look of the frosted acrylic complements all interior color schemes and especially suits our standard konstrux work surfaces which are a designer white laminate.

system screens



The system screen allows for many configurations to help you obtain the ideal solution for the environment in which it is intended to be installed. The screens comprise of two panels stacked on top of one another – either upholstered tackable panels or aluminum slat wall panels. These panels can be used single sided or dual sided for back to back desks as in a benching set-up. The system screen legs have slots to accommodate shelves or a counter top for reception stations. Numerous accessories are available that affix to the slat wall including lighting which has special brackets.

insert screens



The insert screens fit between the dual sided system screens and protrude above the upholstered or slat wall panels. This unique feature provides additional visual privacy while providing the opportunity to add color to the environment. The insert screens are available in frosted acrylic or frosted colored acrylic. Custom materials, patterns, and colors are also available by special request. The insert screen increases privacy while enhancing the aesthetics throughout the environment.

vogue screens



Vogue screens are ideally suited for today's fast paced workplace where collaboration and teamwork are promoted. This simple concept accommodates acrylic, glass or upholstered panels and the screens are available in standard (above desk) or extended (above and below desk) versions. This enables the the screens to increase privacy and reduce noise, cost effectively. Modesty panels and screens no longer need to be ordered separately. The vogue glass screens can be used with dry-erase markers and the upholstered screens can accommodate tack and dry-erase boards.

screen materials

ACRYLIC

frosted finishes



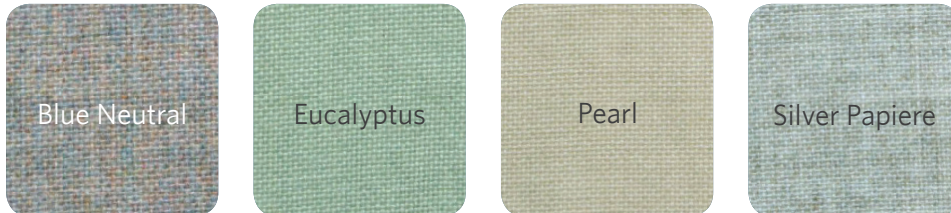
GLASS

translucent finishes



FABRIC

Grade A:
Equal Panel



FABRIC

Grade B:
Whirlwind Panel

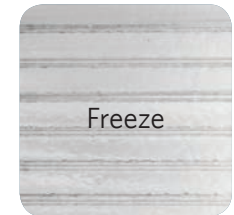


For additional upholstery selections, please visit valofurniture.com



FREEZE

extruded, corrugated acrylic



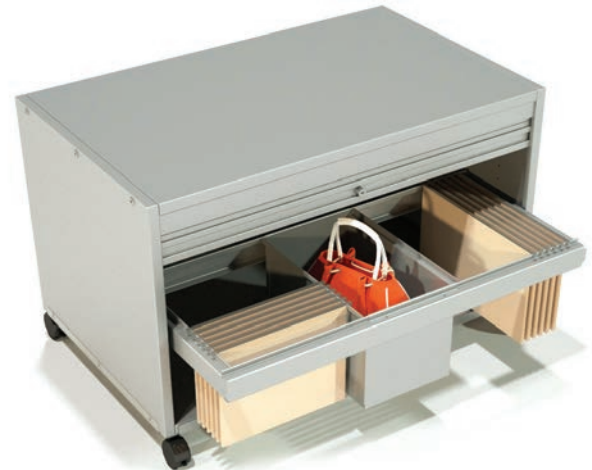
storage

dynamic. mobile. convenient.



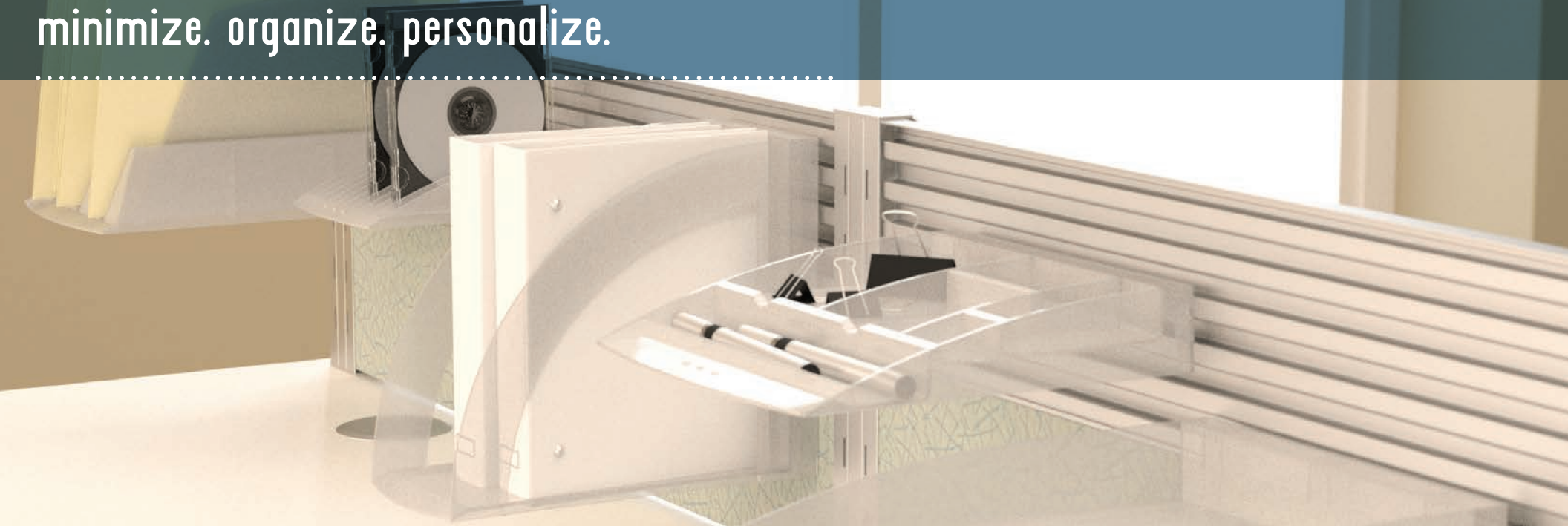
Personal storage has never worked quite like this before. Our mobile or freestanding personal storage units are beyond versatile with many configurations available for both vertical and horizontal units. The standard box with tambour door revolves around 3 sides to make it unhandled. You can tailor the vertical storage units by adding the standard pull out filing cradles, suspended storage box, shelves, and coat divider. Adapt the horizontal units in the same manner, and add an optional upholstered seat pad in a complementary fabric to provide additional seating. Please refer to our price list or contact Customer Service for fabric choices. For the vertical units, attach a top to two units and you will have a standing height work surface which conveniently conceals the storage units.

The mobile drawer pedestals complement the storage program and easily store under the work surface. Filing options ensure the correct amount of storage right at your fingertips. With a gentle curved façade, central locking mechanism, robust casters and ability to suspend both letter and legal files, these units are a must for every workspace. An upholstered seat pad on the box file unit creates additional seating right at your workspace and stows neatly under the work surface when not needed.



accessories

minimize. organize. personalize.



From letter trays to shelves, telephone stands to pencil holders, CD/DVD holders to hanging file cradles, and many more, konstrux offers a wide range of slat wall mounted accessories that allow you to personalize and organize your space. konstrux lets you use vertical space for your accessories maximizing your desk space. In fact, konstrux offers a number of accessories for the entire workspace such as task lighting that fits perfectly at your desk.

Accessories are critical in today's reduced workspaces. Taking advantage of the vertical space around the work surface leaves your workspace uncluttered. Monitor arms and CPU holders keep your computer off the work surface.

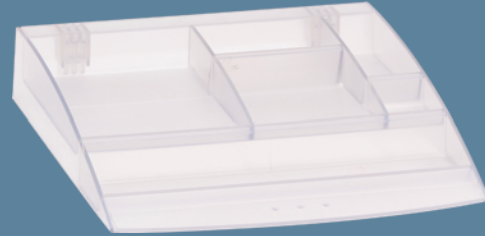
Discuss your specific requirements with our team to ensure we have addressed your needs.



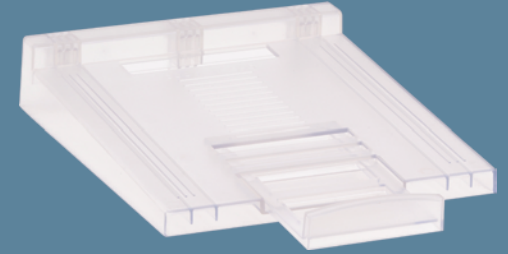
Desk Light



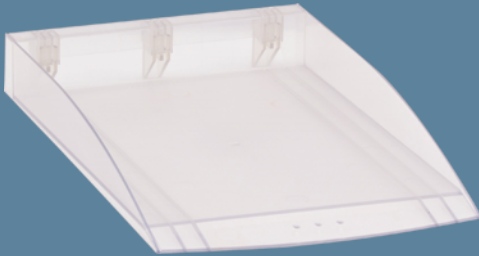
Mini Desk Light



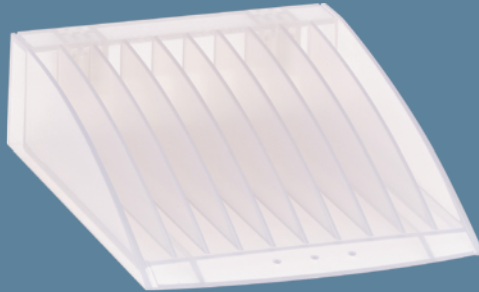
Accessory Tray



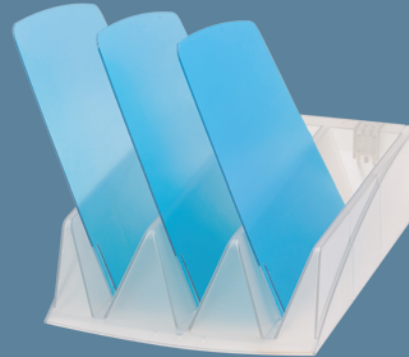
Phone Support



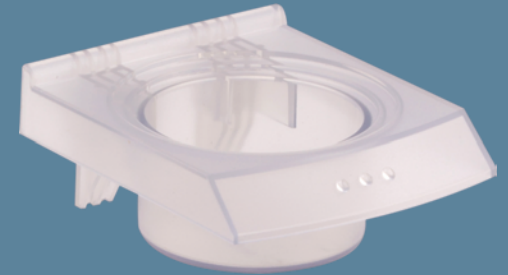
Paper Tray- Letter



CD Holder



Folder Sorter



Cup Holder



Pencil Holder



Binder Holder



Paper Tray - Legal



Desk Clamp

Slat Wall Clamp

Light Clamps

finishes

bold. subdued. monochromatic.



konstrux provides numerous technical solutions enabling the product to support the way you conduct your business. In addition, we also offer support to the design process in creating an engaging environment. Whether it's a laminate finish, upholstery or screen material and color, we offer endless options to help you create a design that works for your space. We have many fabric partners that we work with to provide unique solutions, however a little extra lead time may be required.

With all the options available it is good to know that konstrux has a standard default selection to make the process easier. These standards are clean, crisp and enhance almost any color palette that you may desire. These standards have been selected from the best materials available and we ensure continuity of supply for years to come. Replacements and additions are easy with standard materials as we work with the manufacturers to ensure longevity of supply.

Designers choose our standards and most often add a simple splash of color here or there through the vogue screen selections or the upholstery materials. This ensures that the critical furniture components will always be available and consistency can be retained over years.

standard material selection



laminates

Formica 01 Designer White. D354-60 Wilsonart. Alternate selections are available in our Laminate Finish Guide at valofurniture.com.

screens

Frosted Acrylic or Frosted Glass. Alternate selections are available on our website as well as upholstery finishes.

metal finishes

Color: Silver Aluminium Satin.

Other finishes can be ordered by special request.
Please contact Customer Service at 800-631-1186

brand communications agency



Housed in an historic building built in 1905, this dynamic brand communications agency needed a flexible table program that offered a variety of options to create productive work environments within a space charged with energy and enthusiasm. Challenged with meshing beautifully preserved pine floors, original brick walls, huge structural beams and exposed pipes with furnishings possessing functionality and finesse, the designer turned to konstrux by Valo, a division of Dauphin North America for an enduring table program.

This particular installation incorporated bright and lively privacy panels, large work surfaces, ottomans, task chairs, and storage space that could also double as additional

seating when needed. This project resulted in creating places to accommodate collaboration and sharing of ideas in the open work area as well as individual offices and meeting rooms for work that involves focus and concentration. This has enabled the talented people at this agency to have a choice in the type of space they would like to work within that balances focus and collaboration, all in a reduced footprint that is cost effective and environmentally-friendly.

"We compared konstrux to 2 or 3 other product lines, and found it to be well made, versatile, beautiful and functional. Everyone was focused on creating an excellent experience for the end user, and collectively we succeeded."

- Interior Designer

real estate software company



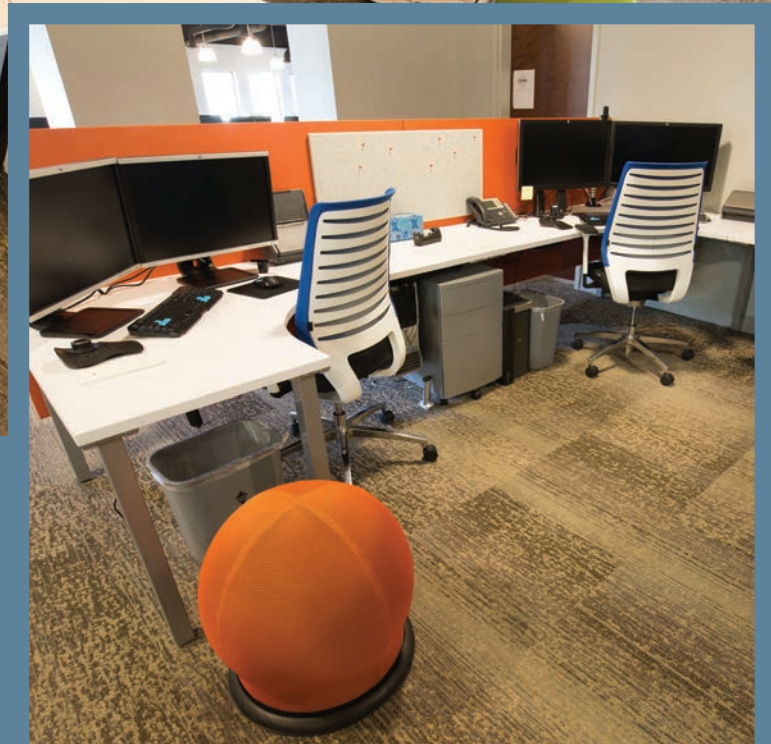
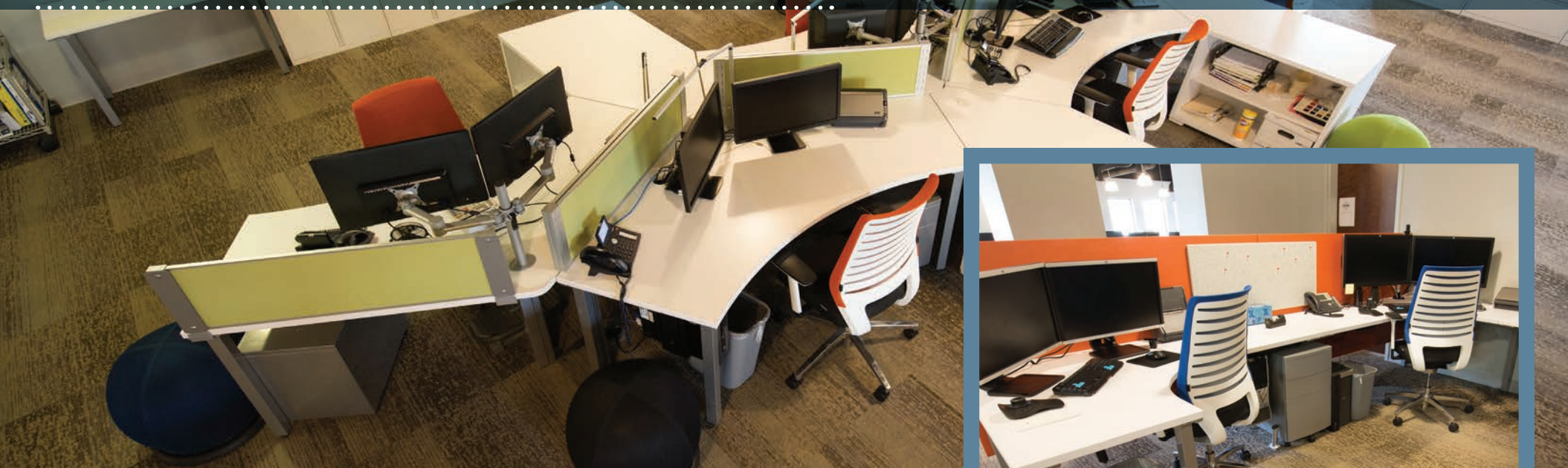
This market leader has experienced significant growth since its inception in 1995. Through a very aggressive acquisition strategy, they have brought together numerous companies, best products, and talented people to become the largest independent provider of real estate and facilities software in the industry. With this significant growth they needed a focused consultative furniture solution at an acceptable price that would enable continued growth and the flexibility to meet changing needs for their corporate office building.

Planning workspaces for a large mobile workforce and incorporating technology is very challenging. The konstrux table system streamlined the workspace and provided cable management, organization as well as privacy. konstrux is very flexible to meet individual needs as well as visually appealing which promotes a comfortable and productive work environment that is functional as well as economical.

"Many of the challenges for the 25,300 SF office suite revolved around technology and how to successfully and cleanly provide the client with what they needed when issues were presented."

- Interior Designer

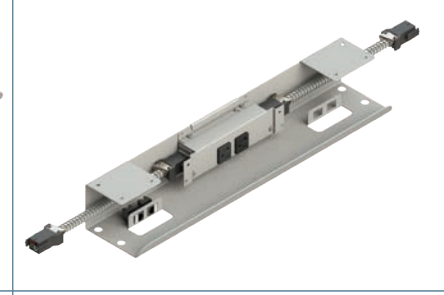
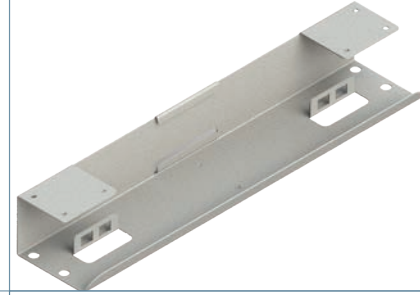
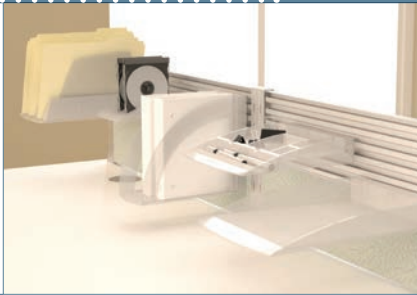
manufacturing company



Challenged with the requirement to transition workspaces that were typical in the 80's and 90's to today's more open floor plans as well as to a new, state of the art, manufacturing facility, was a large task charged to this design team. They needed to not only provide workspaces for focus work, but they also had to provide spaces that catered to this company's collaborative culture. The term Dynamic Spaces was coined to give meaning to the design of environments that promote collaboration, inspire innovation, increase productivity, and retain talent, all within a reduced footprint.

This company has been experiencing rapid growth as employees have embraced new work styles that allow for them to choose the type of workspace they require whether for a quiet, private place to deal with sensitive materials or to complete focus work, a conference room for meetings on-site, a teleconference station for meetings with remote employees or just a productive place for team meetings. With konstrux, you have the ability to create designs that meet the specific needs of that company.

konstrux at-a-glance



USA: 100 Fulton Street Boonton, NJ 07005 **TEL:** 800.631.1186 **FAX:** 800.220.3844

EMAIL: info@valofurniture.com **WEB:** www.valofurniture.com

VK.B.0815 © Valo Furniture is a division of Dauphin North America

VALO[®]
A division of Dauphin North America